



# GMT MONTHLY MEMBERSHIP PROGRESS REPORT

Results as of: 5/31/2019

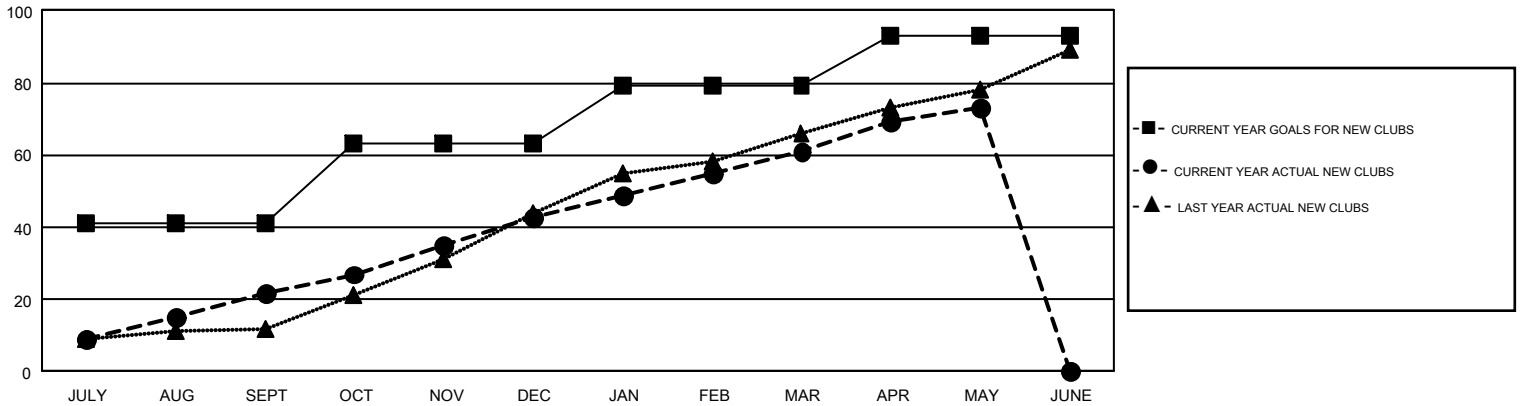
## GMT Constitutional Area 6, Group E

GMT: VASUDEV VALAWALKAR

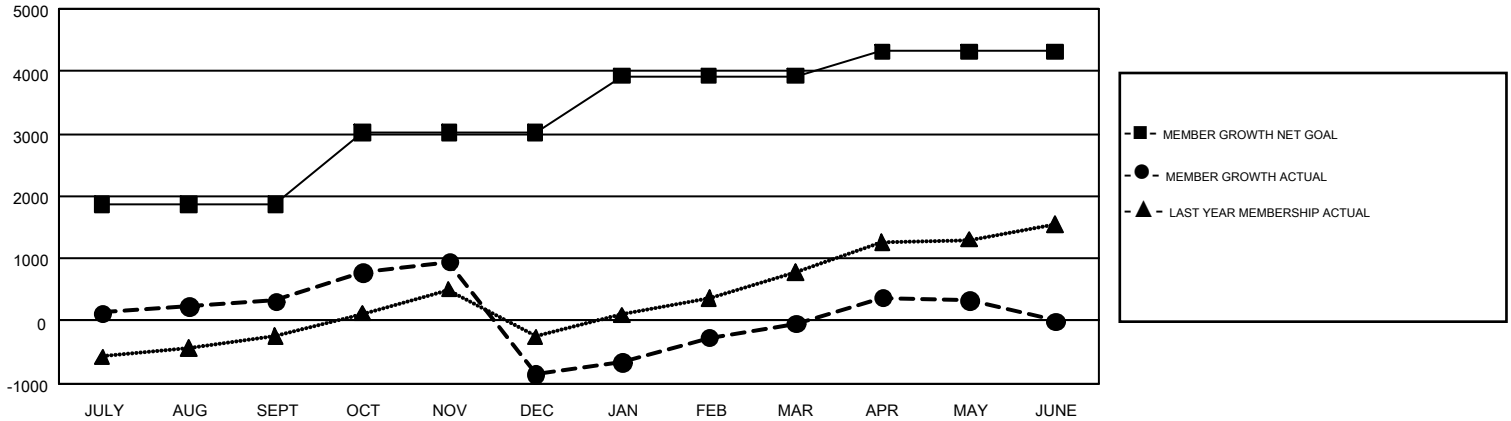
REPORT DOES NOT INCLUDE CLUBS IN UNDISTRICTED AREAS.

Clubs				Members			
RESULTS FOR 2018-2019				RESULTS FOR 2018-2019			
QUARTER	NEW CLUB GOAL	NEW CLUBS	DROPPED CLUBS	QUARTER	MEMBER GROWTH NET GOAL	MEMBER GROWTH ACTUAL	DROPPED MEMBERS ACTUAL (including transfers)
JULY/AUG/SEPT	41	22	9	JULY/AUG/SEPT	1,861	1,424	966
OCT/NOV/DEC	22	21	54	OCT/NOV/DEC	1,153	1,425	2,488
JAN/FEB/MAR	16	18	8	JAN/FEB/MAR	914	1,612	453
APR/MAY/JUNE	14	12	0	APR/MAY/JUNE	387	953	492

GOALS AND ACTUAL NEW CLUBS CUMULATIVE



GOALS AND ACTUAL MEMBERS CUMULATIVE



DROPPED CLUBS: 71	691 CLUBS OF 1,139 ADDED 1 OR MORE NEW MEMBERS	<b>GENDER DISTRIBUTION</b> MALE 25,947 (75.80%) FEMALE 8,284 (24.20%)
<b>DROPPED MEMBERS</b> DECEASED 112 CLUB CANCELLED 1,329 OTHER 2,958 <b>TOTAL 4,399</b>	<a href="#">CLICK HERE FOR CUMULATIVE MEMBERSHIP DATA</a>	TOTAL FAMILY UNIT MEMBERS 10,739 FAMILY MEMBERS PAYING HALF DUES 5,732